



PLANO H stands for willtec melamine resin foam with hydrophobizing impregnation. This material is open-cell, highly sound-absorbent and at the same time oil and water repellent.

>> **Service**

- Call our telephone hotline for custom advice on your situation.

pinta acoustic gmbh  
Otto-Hahn-Straße 7  
82216 Maisach, Germany  
info +49 (0)8141.88 88-0  
fax +49 (0)8141.88 88-555  
[www.pinta-acoustic.de](http://www.pinta-acoustic.de)



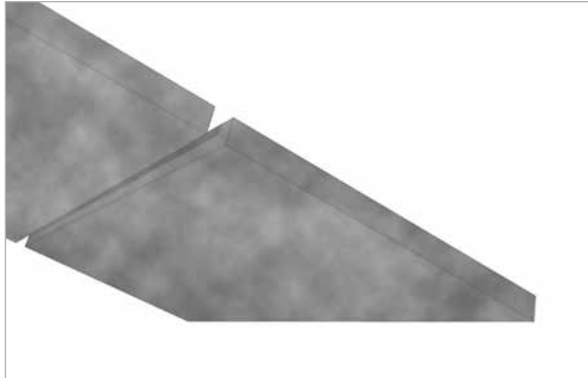
**PLANO H – a lightweight, acoustically effective, and at the same time oil and water repellent product**

PLANO H uses willtec melamine resin foam with hydrophobizing impregnation. This material is open-cell, highly sound-absorbent and at the same time oil and water repellent. These properties make it ideal for use in pumping stations, for absorbent surfaces at shunting terminals or areas exposed to large amounts of spray.



>> Choose from a range of alternatives:

- pinta phonestop V  
with hydrophobizing impregnation



### Product advantages

- Oil and water repellent
- Resistant to most cooling and drilling emulsions
- Easy to install using fireproof system adhesive
- Environment-friendly, free from synthetic and natural mineral fibers, halogens and CFCs
- Reduced transport and handling costs due to low weight
- Exceptionally good sound absorption
- Variable panel sizes and element thicknesses possible
- High resistance to ageing

### Colors

pinta PLANO H is available in the following color:



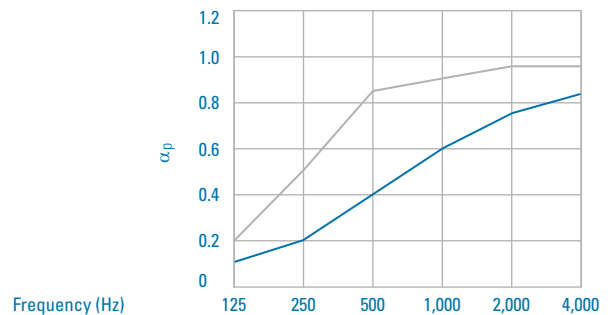
PLANO H gray (inhomogeneous)

No color coating is possible on PLANO H.

### Thickness

20 mm, 30 mm, 40 mm and 50 mm  
Other thicknesses upon request.

Sound absorption coefficient  $\alpha_p$ , PLANO H, according to DIN EN ISO 11654



|            | 125  | 250  | 500  | 1,000 | 2,000 | 4,000 |
|------------|------|------|------|-------|-------|-------|
| PLANO H 20 |      |      |      |       |       |       |
| $\alpha_p$ | 0.10 | 0.20 | 0.40 | 0.60  | 0.75  | 0.85  |
| PLANO H 50 |      |      |      |       |       |       |
| $\alpha_p$ | 0.20 | 0.50 | 0.85 | 0.90  | 0.95  | 0.95  |

### Product data PLANO H

| Characteristic                                    | DIN             | Value                           |
|---|-----------------|---------------------------------|
| Base material                                     |                 | Melamine resin foam             |
| Color   |                 | gray (inhomogeneous)            |
| Material density*                                 | EN ISO 845      | 9.5 ± 1.5 kg/m³                 |
| Thermal conductivity (d = 50 mm)                  | DIN 52 612      | $\lambda_{10, tr} < 0.035$ W/mK |
| Sound absorption coefficient (d = 50 mm; 2000 Hz) | DIN 52 215      | > 90 %                          |
| Tensile strength                                  | DIN EN ISO 1798 | 120 to 180 kPa                  |
| Percentage elongation after fracture              | DIN EN ISO 1798 | 15 to 29 %                      |
| Compression hardness                              | ISO 3386-1      | 6 to 11 kPa                     |
| Diffusion resistance coefficient                  | DIN 52615       | approx. 1-2                     |
| Length-specific flow resistance                   | DIN EN 29053    | 8 to 20 kNs/m⁴                  |
| Long-term temperature stability                   |                 | 180 °C                          |
| Short-term temperature stability                  |                 | 220 °C                          |

The foam may have pores of different sizes according to the texture.

\* Pursuant to EN ISO 845, determined with samples having the following minimum dimensions: 250 x 250 x 250 mm.

\*\* As an upper limit, 10 pores per m² with a diameter in a range of > 5 – 15 mm may occur on cut surfaces..

### Dimensions

1,250 x 625 mm  
Other dimensions on request.

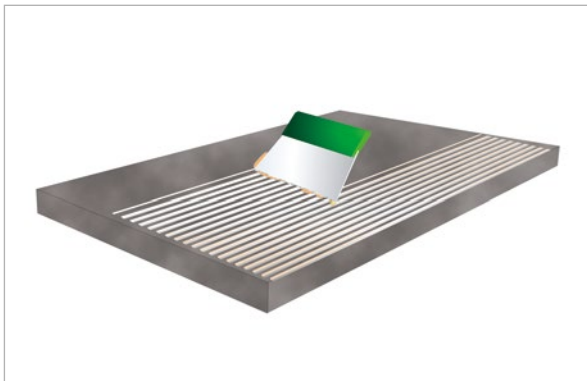
## >> Please note

Product details are based on our current knowledge and experience. In view of the wide range of possible applications, all information is provided without obligation and does not constitute a guarantee of properties.

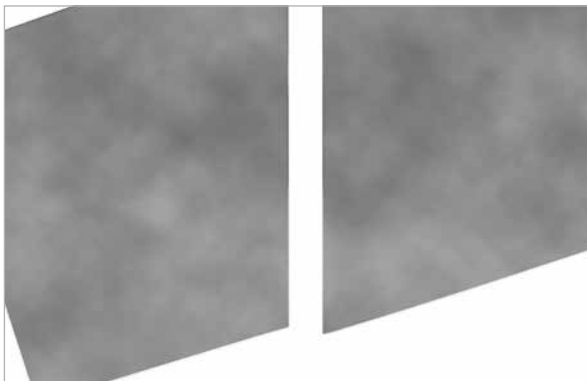
This also applies to any proprietary rights of third parties. We reserve the right to make technical changes without notification.



Cut absorber to required size



Apply acoustic adhesive



Lay absorbers with a gap of at least 20 mm

### Important information on the hydrophobic and oleophobic properties of pinta PLANO H

In case liquids are splashed or sprayed on PLANO H, such as water, driving rain, or oil, the liquid will roll off the surface of PLANO H without infiltrating. Still, when immersed in standing liquid, the PLANO H panels soak up. This must be avoided.

### Important information on visual installation of pinta PLANO H

Due to its water and oil repelling properties, pinta PLANO H turns to inhomogeneous gray. This is a product property and not a defect. A subsequent color coating on site or in the factory is not possible. We recommend pinta phonestop V with hydrophobizing impregnation for visually demanding applications.

### Installation advice

We recommend using the below-mentioned adhesives for bonding pinta PLANO H to the following surfaces:

- on absorbent substrates such as wood, brick, or concrete: pinta Acoustic Adhesive D
- on smooth, non-absorbent substrates such as steel panels or PVC: pinta Acoustic Adhesive S

Gloves should be worn when installing pinta PLANO H, to avoid getting dirt on the panels. The absorbers can be cut with a sharp knife. We recommend laying the absorbers with a shadow gap of at least 20 mm to achieve an optimum appearance.

## >> FAQs about bonding with acoustic adhesive D

- |   |  |
|---|--|
| <ul style="list-style-type: none"> <li>■ Spacing between elements: <math>\geq 20</math> mm</li> <li>■ Acoustic adhesive D is ready for use</li> <li>■ Element adjustment time: 5 minutes</li> <li>■ Shelf life: 12 months in unopened original package</li> </ul> | <ul style="list-style-type: none"> <li>■ Consumption: 1.2 to 1.5 kg/m<sup>2</sup> for whole-area bonding</li> <li>■ Working temperature range: +5 to +25 °C</li> <li>■ Drum size: 20 kg</li> </ul> |
|---|--|

## **pinta acoustic adhesive D**

### **Field of application**

Adhesion of pinta absorbers (except A2 products) to porous interior surfaces.

### **Features**

pinta acoustic adhesive D is ready for use and bonds immediately. Nevertheless, absorbers can be adjusted within 5 minutes after laying. pinta acoustic adhesive D adheres securely to concrete, mineral plasters, brickwork, and boards made of gypsum, plasterboards, and gypsum fibers as well as wooden particle boards (manufacturer's instructions must be followed).

### **Shelf life**

At least 12 months when stored in a dry, frost-free place in unopened original packaging.

### **Lowest film formation temperature**

approx. +4°C.

### **Working temperature range**

From approx. +5 °C to approx. +25 °C. Generally, pinta acoustic adhesive D must not be exposed to sub-zero temperatures.

### **Surface**

Surfaces must be even, clean, dry, solid, stable, and free of dust, oil, and wax. In particular, wallpapers and coats of paint must be removed. Surfaces with insufficient stability, e.g., loose plasters, must be undercoated using a commercially available primer thinned with water in a ratio of 1:1. Uneven surfaces must be smoothed. We recommend carrying out an adhesion test.

### **Application**

Using a notched trowel (size 3-4), pinta acoustic adhesive D is applied to the whole surface area of either the substrate or the rear side of the panels. The absorbers are pressed on and aligned. Fresh stains of adhesive must be wiped off with water. During and after adhesion of pinta products, good ventilation must be ensured so that the adhesive sets quickly.

### **Consumption**

1.2 to 1.5 kg/m<sup>2</sup> for whole-area adhesion.

### **Please note**

We recommend carrying out an adhesion test.

## **pinta acoustic adhesive S**

### **Fields of application**

pinta acoustic adhesive S is a polydimethylsiloxane-based adhesive and is particularly suitable for bonding pinta absorbers to smooth, non-porous surfaces.

### **Features**

pinta acoustic adhesive S is ready for use and bonds immediately. Nevertheless, absorbers can be adjusted within 5 minutes after laying. pinta acoustic adhesive S adheres securely to surfaces such as steel panels, trapezoidal sheet metal and PVC.

### **Shelf life**

12 months when stored in a dry, cool, and frost-free place in unopened original packaging.

## **>> FAQs about bonding with acoustic adhesive S**

- Spacing between elements:  $\geq 20$  mm
- Acoustic adhesive S is ready for use
- Element adjustment time: 5 minutes
- Shelf life: 12 months in unopened original package
- Consumption: half a cartridge per m<sup>2</sup>
- Working temperature range: +5 to +40 °C
- Packaging unit: 12 pcs. per carton



### Working temperature range

From approx. +5 °C to approx. +40 °C. Generally, pinta acoustic adhesive S must not be exposed to sub-zero temperatures.

### Skin formation

Within 5 minutes at +23 °C and 50 % relative humidity.

### Temperature resistance

From -50 °C to +180 °C.

### Surface pre-treatment

Surfaces must be stable, clean, dry, and free of oil and grease.

### Application

pinta acoustic adhesive S is applied to the surface or to the rear side of the panels in strips. The number of strips depends on the product and the size of the absorbers.

### Consumption

Approx. half a cartridge per m<sup>2</sup>.

### Please note

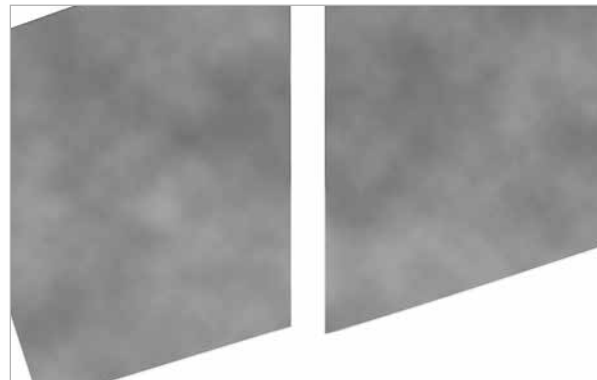
We recommend carrying out an adhesion test.



Cut absorber to required size



Apply acoustic adhesive



Lay absorbers with a gap of at least 20 mm

## >> Notes on adhesion

We recommend carrying out an adhesion test, as the precise composition of the underlying surface must always be verified on site. Surfaces must be even, clean, dry, solid, stable, and free of dust, oil, and wax. In particular, wallpapers and coats of paint

must be removed. Surfaces with insufficient stability, e.g., loose plasters, must be undercoated using a commercially available primer thinned with water in a ratio of 1:1. Uneven surfaces must be smoothed.

## Checklist

### Material

PLANO H: melamine resin based soft foam with hydrophobizing impregnation; inherent product color of PLANO H is gray (inhomogeneous).

Building material B1 (flame-retardant) according to DIN 4102.

### Dimensions

1,250 x 625 mm

special dimensions: \_\_\_\_\_

### Material thickness

20 mm

30 mm

40 mm

50 mm

special thickness: \_\_\_\_\_

### Adhesives

pinta acoustic adhesive D

For porous surfaces such as concrete, mineral plasters, plasterboard, gypsum fibers, and wooden particle boards (manufacturer's specifications are to be observed)

pinta acoustic adhesive S.

For non-porous surfaces such as steel panels, trapezoidal sheet metal, and PVC (manufacturer's specifications are to be observed)

## >> Contact / Inquiry

Company stamp:

Quantity

m<sup>2</sup>

pinta acoustic gmbh  
Otto-Hahn-Straße 7  
82216 Maisach, Germany  
phone +49 (0)8141. 88 88-0  
fax +49 (0)8141. 88 88-555  
e-mail: info@pinta-acoustic.de